



CAVIAR
ROYAL GIFT

APPLE WATCH CASE
ASSEMBLY INSTRUCTIONS



STEP 01

Remove the case from the box and place it face down.



STEP 02

Take out the branded screwdriver from the bottom case.



STEP 03

Unscrew the four mounting screws on the back of the case.



STEP 04

Remove the back cover of the case.



STEP 05

Carefully fold the components to avoid losing small case parts.



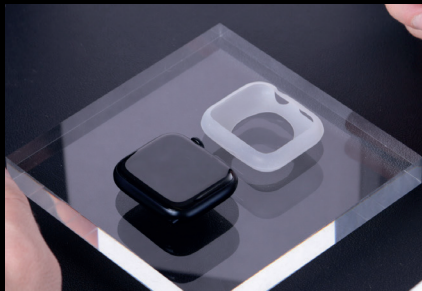
STEP 06

Take out the Apple Watch.



STEP 07

Turn off the Apple Watch to avoid accidental clicks.



STEP 08

Remove the silicone protective case from the packaging.



STEP 09

Insert the Apple Watch into the protective case.



STEP 10

Carefully secure the edges of the protective case.



STEP 11

Check the evenness of the tension, the edges of the cover should be adjacent to the watch.



STEP 12

Start inserting the watch in the protective case into the main case.



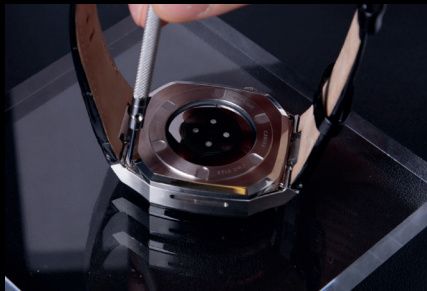
STEP 13

Securely fix the watch in the case body.



STEP 14

Press against the back cover of the case to fix the watch.



STEP 15

Secure the back cover with screws.



STEP 16

Check the tightness of the cover fit.



STEP 17

Check the fit of the watch to the case.



STEP 18

Put the watch on your hand.

SEE MORE PRODUCTS ON OUR
WEBSITE CAVIAR.GLOBAL

THANK YOU FOR CHOOSING CAVIAR



CAVIAR.GLOBAL